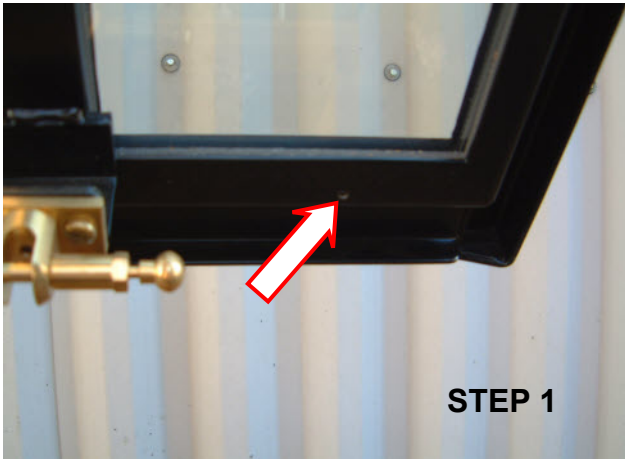


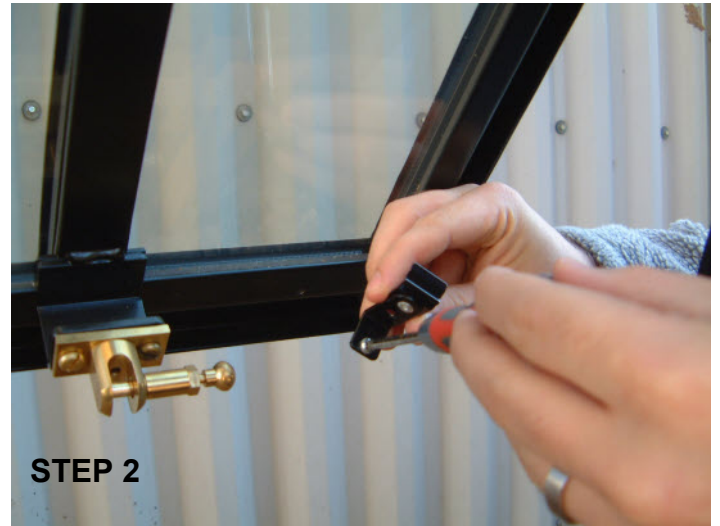
# FITTING INSTRUCTIONS



Included in this kit are 4 x brackets, 4 x fixing screws and a blind. You will require a small Pozidrive screwdriver (not supplied)

STEP 1 Locate the 4 fixing holes at the top and the bottom of the opening casement

STEP 2  
Carefully attach each bracket with the screw supplied. **DO NOT OVER TIGHTEN**. The open clip part of the bracket should face up on the bottom of the casement and down at the top.



STEP 3  
Unwrap the blind and clip the rail with the fabric attached into either the top or bottom brackets. Clip the front of the rail into the bracket and snap down back edge of the rail

STEP 4  
Keeping the fabric of the blind in the closed position extend the bottom rail and snap the rail into the clips

