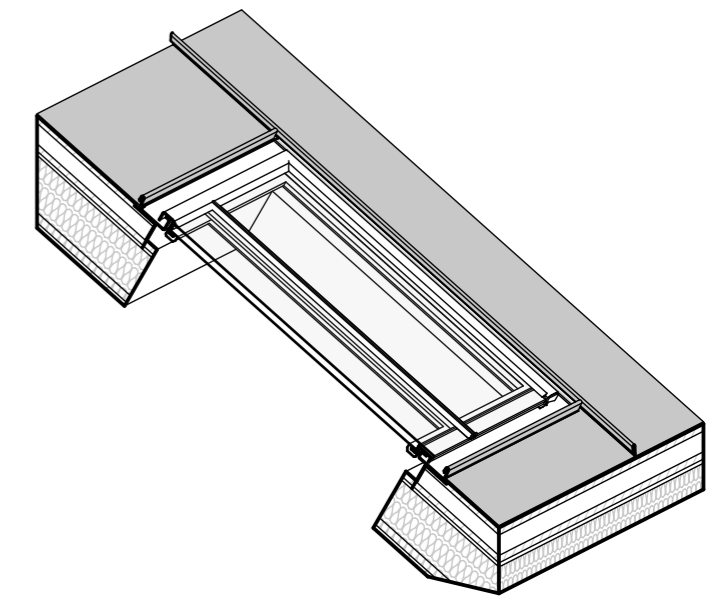
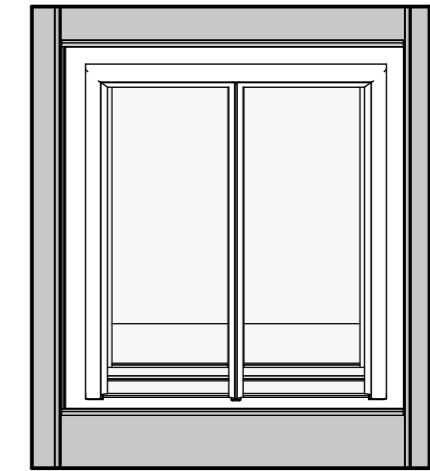
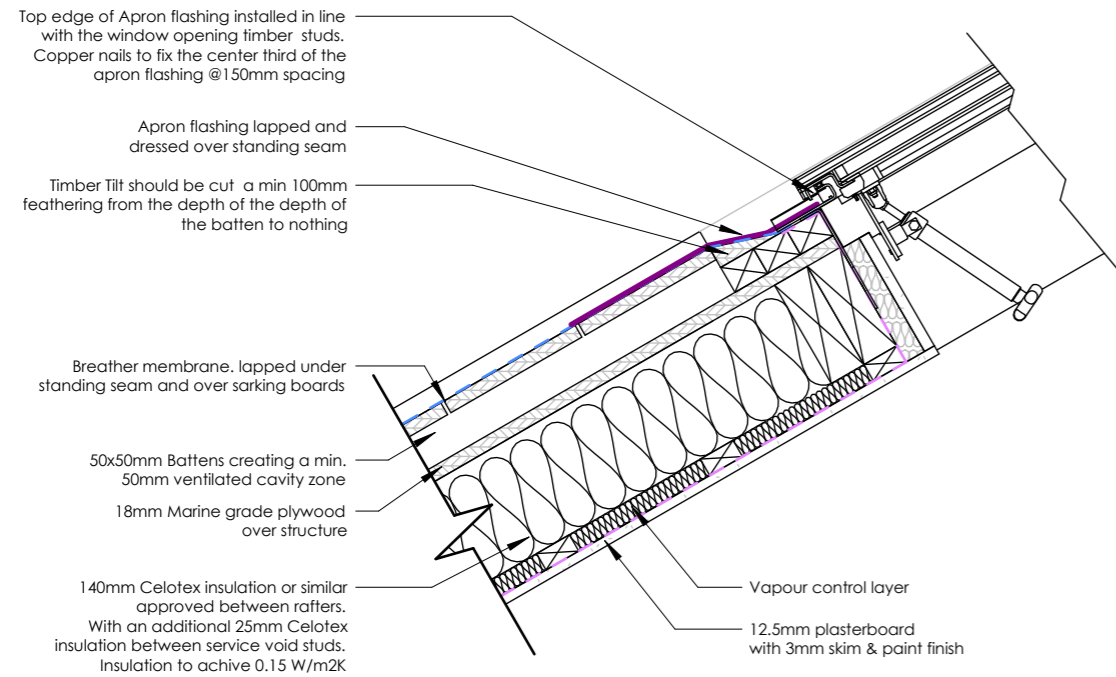
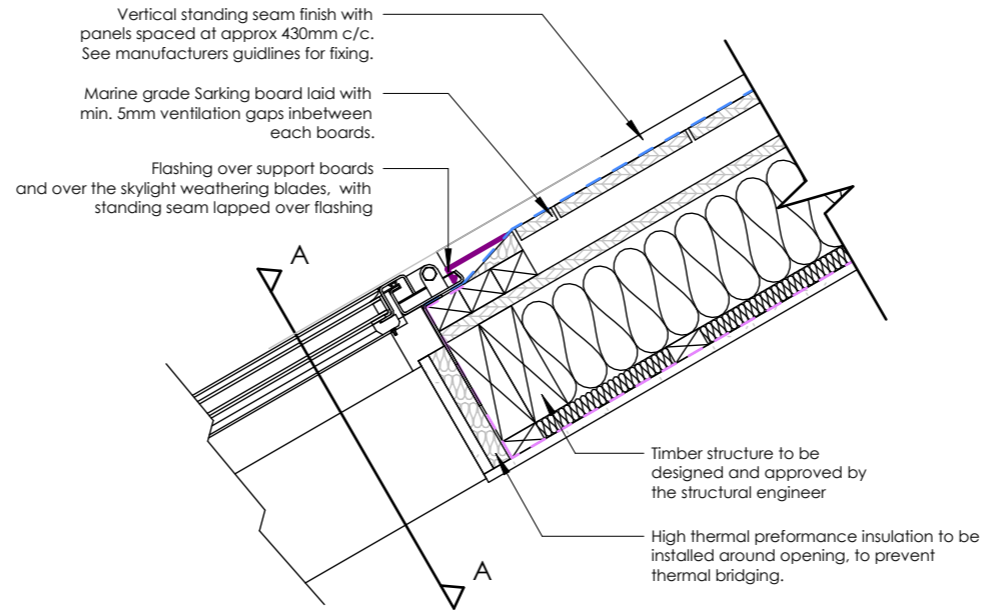


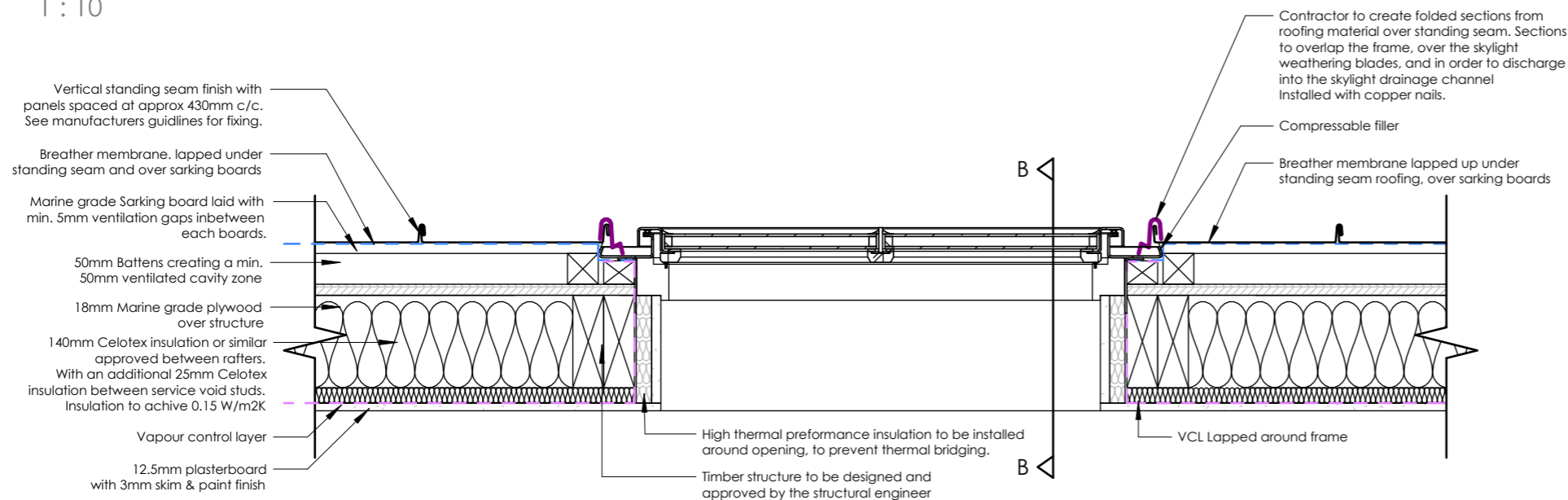
Detail Notes:  
Stella Rooflight actuated rooflight requires bespoke design according to project requirements. Suitable for a pitched roof between 17 and 70 degrees.

Roof Construction to achieve a 'U' Value compliant with local regulations. Potential thermal bridge area at joist support overcome by installing overlapped high performing rigid insulation or similar to 38mm ceiling batten zone extended a minimum 750mm all round aperture. A rigid insulation is a highly insulated block that helps to eliminate cold bridging at junctions.



### 1 Stand & Seam - MGL3920A\_Conservation Rooflight - Section B

1 : 10



### 4 Stand & Seam - MGL3920A\_Conservation Rooflight - Section A

1 : 10

Date: 27/04/2024

### MGL3920A - Stand & Seam

#### Client:

Stella Rooflight Ltd

#### Title:

Bespoke Opening Conservation Roof Window - Manual Opening - STAND & SEAM

REF: MGL3435A

Material: 316L ST STEEL

Finish: Bead Blast & Powder Coat Textured Black Seal/Sealant Colour: Black/Black

Part Type: Manufactured

Weight: 151kg

Project No. 1001

Drawing No. 003

Drawn By: HRH

Rev: Rev1

1 : 10 @A3