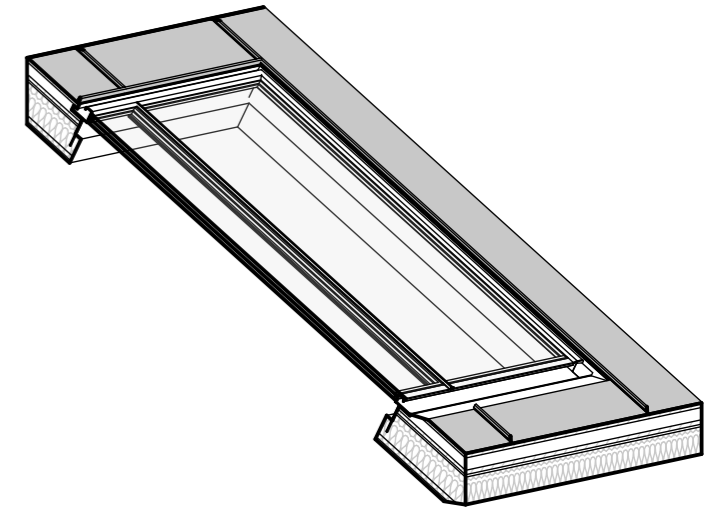
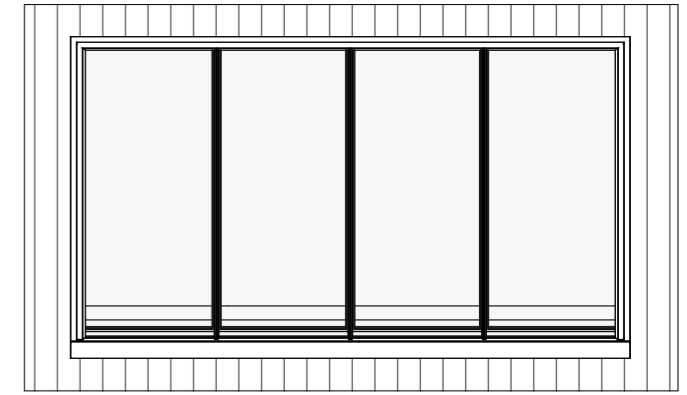
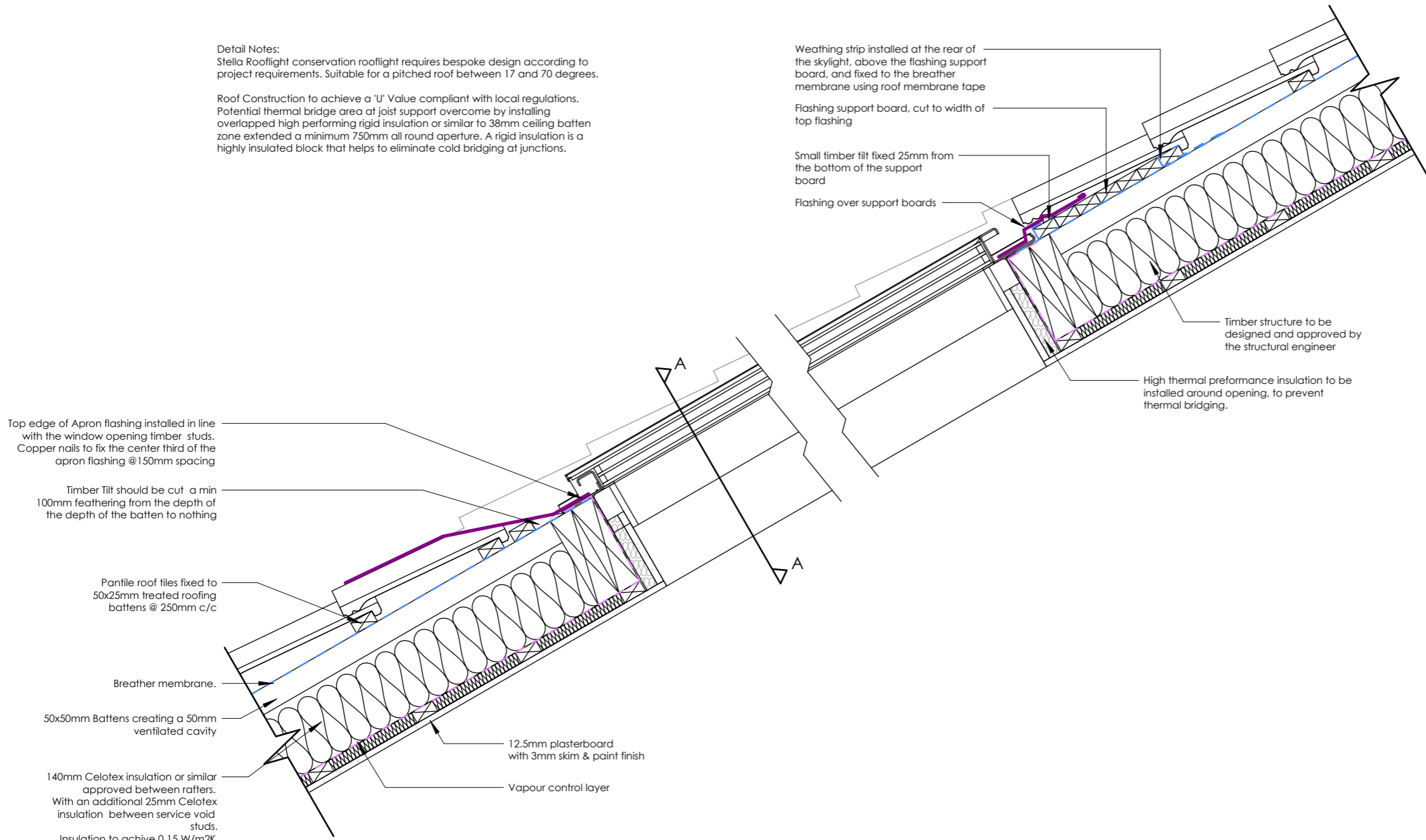


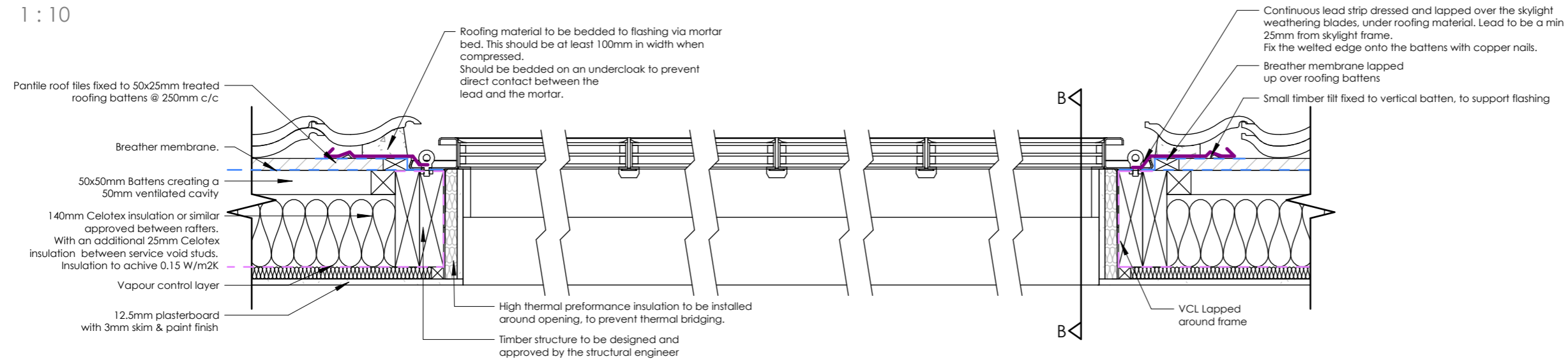
Detail Notes:
Stella Rooflight conservation rooflight requires bespoke design according to project requirements. Suitable for a pitched roof between 17 and 70 degrees.

Roof Construction to achieve a 'U' Value compliant with local regulations. Potential thermal bridge area at joist support overcome by installing overlapped high performing rigid insulation or similar to 38mm ceiling batten zone extended a minimum 750mm all round aperture. A rigid insulation is a highly insulated block that helps to eliminate cold bridging at junctions.

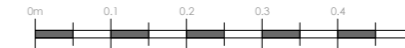


PANTILE - MGL4014A_Triple Glazed Fixed - SECTION B

1 : 10



Scale = 1:10@A3



PANTILE -MGL4014A_Triple Glazed Fixed - SECTION A

1 : 10

Date: 27/04/2024

MGL4014A - Pantile

Client:

Stella Rooflight Ltd

Title:

Bespoke Opening Conservation Roof Window - Triple Glazed Fixed - PANTILE

REF: MGL3435A

Material: 316L ST STEEL

Finish: Bead Blast & Powder Coat Textured Black Seal/Sealant Colour: Black/Black

Part Type: Manufactured

Weight: 151kg

Project No. 1003

Drawing No. 002

Drawn By: HRH

Rev: Rev1

1 : 10 @A3