

Detail Notes:  
Stella Rooflight conservation rooflight requires bespoke design according to project requirements. Suitable for a pitched roof between 17 and 70 degrees.

Roof Construction to achieve a 'U' Value compliant with local regulations. Potential thermal bridge area at joist support overcome by installing overlapped high performing rigid insulation or similar to 38mm ceiling batten zone extended a minimum 750mm all round aperture. A rigid insulation is a highly insulated block that helps to eliminate cold bridging at junctions.

Weathering strip installed at the rear of the skylight, above the flashing support board, and fixed to the breather membrane using roof membrane tape

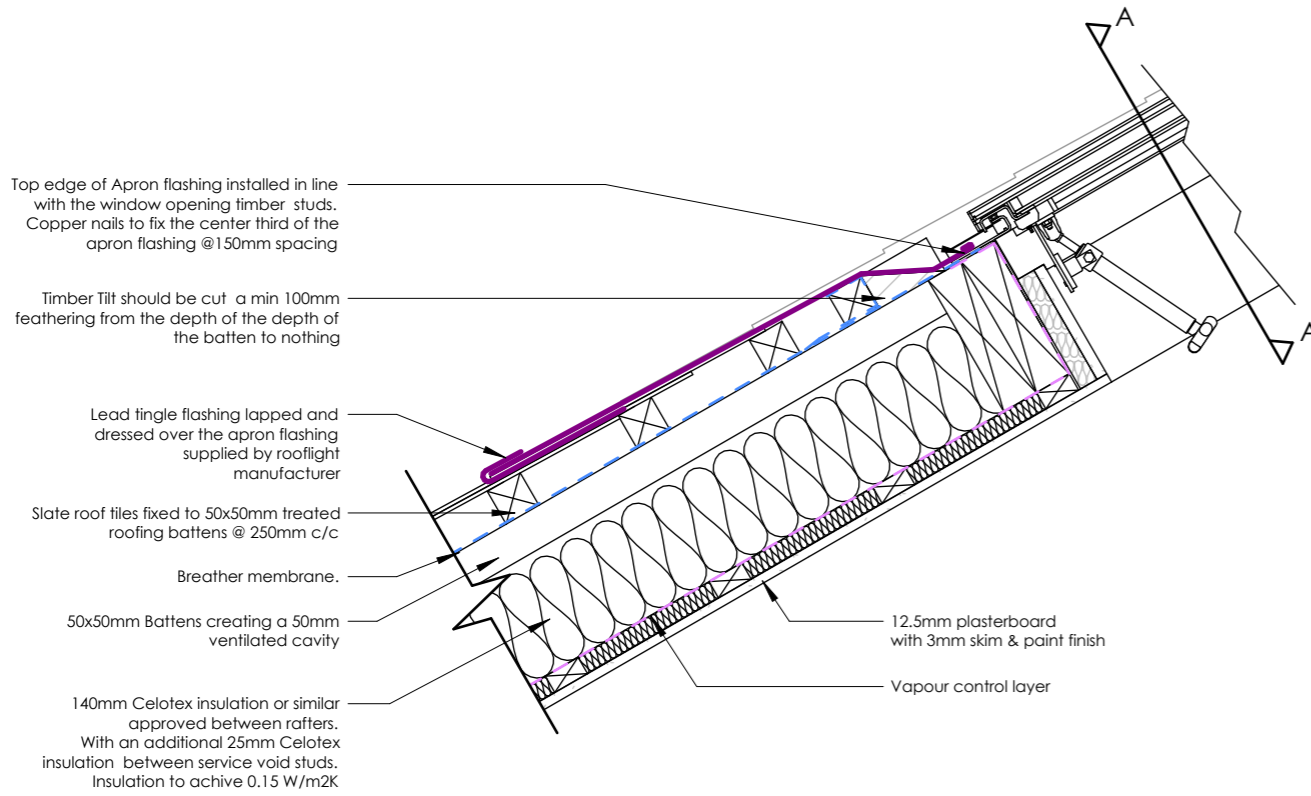
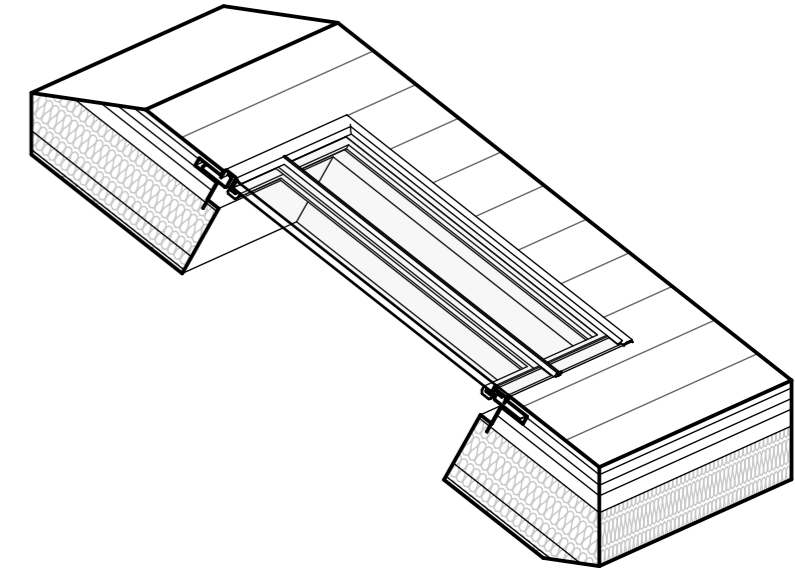
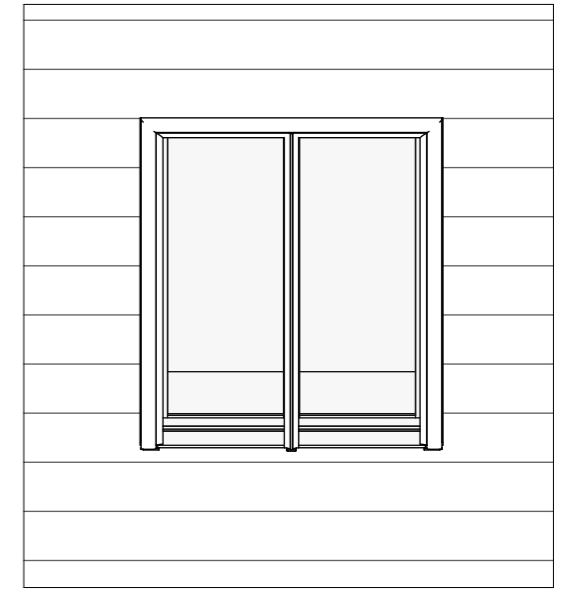
Flashing support board, cut to width of top flashing

Flashing over support boards

Small timber tilt fixed 25mm from the bottom of the support board

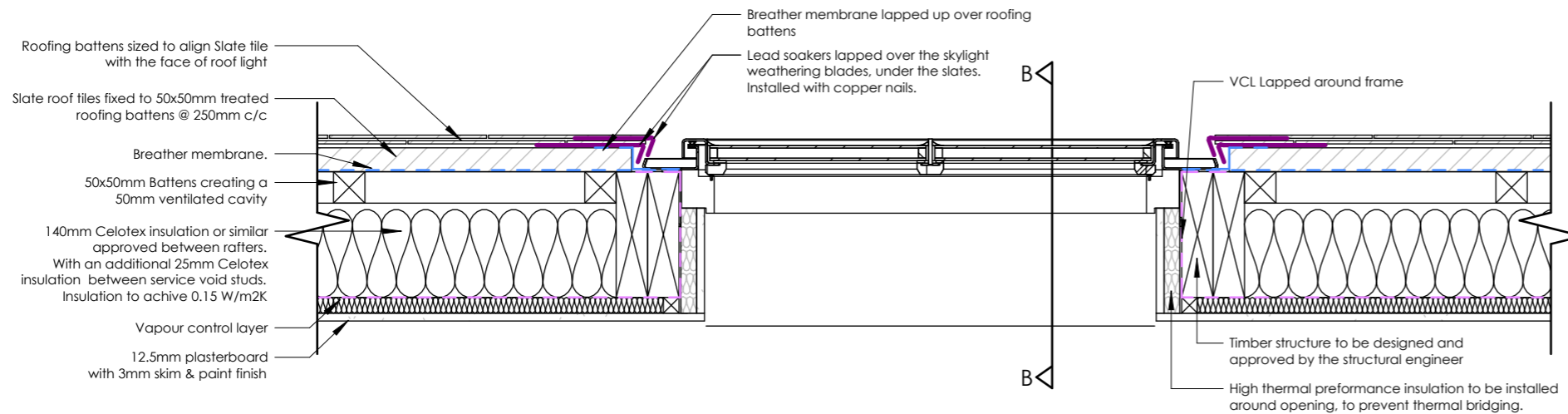
Timber structure to be designed and approved by the structural engineer

High thermal performance insulation to be installed around opening, to prevent thermal bridging.

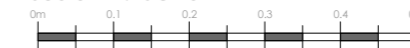


## 1 SLATE - MGL3920A\_Conservation Rooflight - Section B

1 : 10



Scale = 1:10@A3



## 2 SLATE - MGL3920A\_Conservation Rooflight - Section A

1 : 10

Date: 27/04/2024

MGL3920A - Slate

Client:

Stella Rooflight Ltd

Title:

Bespoke Opening Conservation Roof Window - Manual Opening - SLATE

REF: MGL3435A

Material: 316L ST STEEL

Finish: Bead Blast & Powder Coat Textured Black

Seal/Sealant Colour: Black/Black

Part Type: Manufactured

Weight: 151kg

Project No. 1001

Drawing No. 001

Drawn By: HRH

Rev: Rev1

1 : 10 @A3