

Detail Notes:
Stella Rooflight conservation rooflight requires bespoke design according to project requirements. Suitable for a pitched roof between 17 and 70 degrees.

Roof Construction to achieve a 'U' Value compliant with local regulations. Potential thermal bridge area at joist support overcome by installing overlapped high performing rigid insulation or similar to 38mm ceiling batten zone extended a minimum 750mm all round aperture. A rigid insulation is a highly insulated block that helps to eliminate cold bridging at junctions.

Weathering strip installed at the rear of the skylight, above the flashing support board, and fixed to the breather membrane using roof membrane tape

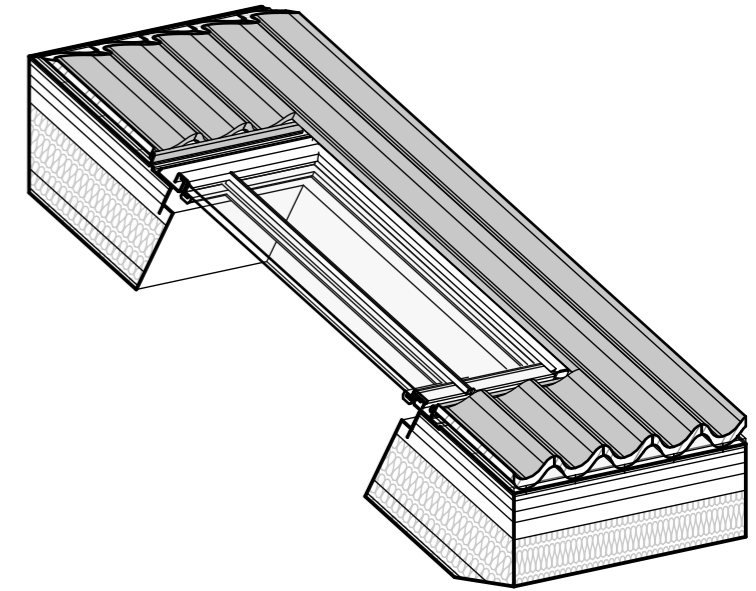
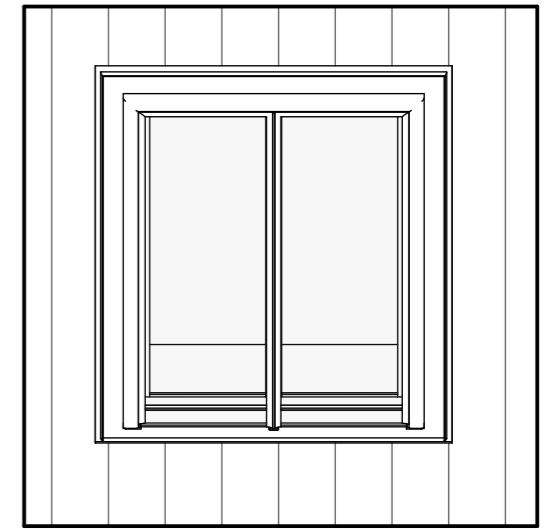
Flashing support board, cut to width of top flashing

Small timber fill fixed 25mm from the bottom of the support board

Flashing over support boards

Timber structure to be designed and approved by the structural engineer

High thermal performance insulation to be installed around opening, to prevent thermal bridging.



Top edge of Apron flashing installed in line with the window opening timber studs. Copper nails to fix the center third of the apron flashing @ 150mm spacing

Timber Tilt should be cut a min 100mm feathering from the depth of the depth of the batten to nothing

Pantile roof tiles fixed to 50x25mm treated roofing battens @ 250mm c/c

Breather membrane.

50x50mm Battens creating a 50mm ventilated cavity

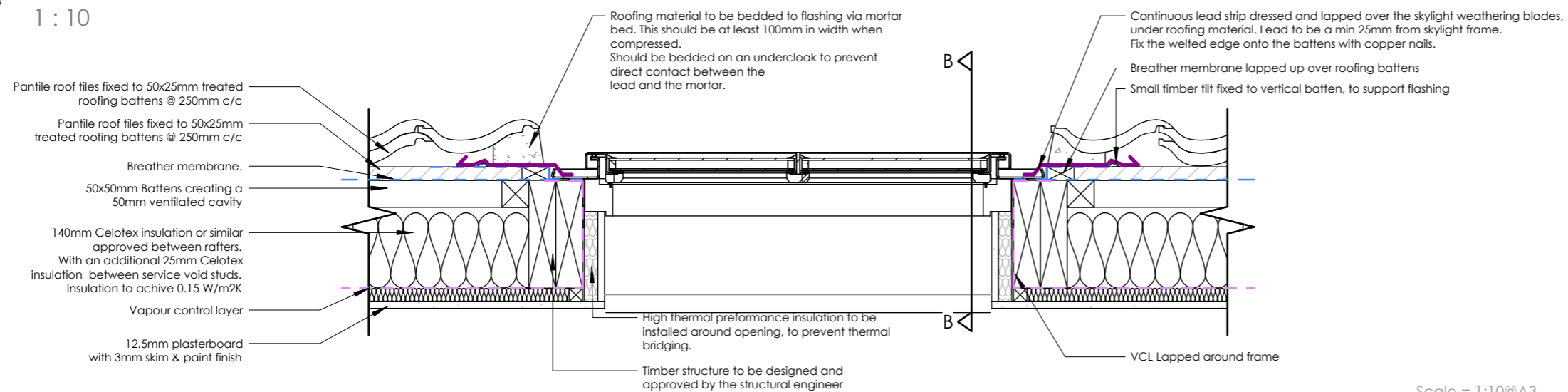
140mm Celotex insulation or similar approved between rafters. With an additional 25mm Celotex insulation between service void studs. Insulation to achieve 0.15 W/m2K

12.5mm plasterboard with 3mm skim & paint finish

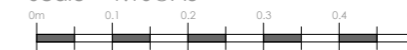
Vapour control layer

1 PANTILE - MGL3920A_Conservation Rooflight - Section B

1 : 10



Scale = 1:10@A3



2 PANTILE - MGL3920A_Conservation Rooflight - Section A

1 : 10

Date: 27/04/2024

MGL3920A - Pantile

Client:

Stella Rooflight Ltd

Title:

Bespoke Opening Conservation Roof Window - Manual Opening - PANTILE

REF: MGL3435A

Material: 316L ST STEEL

Finish: Bead Blast & Powder Coat Textured Black Seal/Sealant Colour: Black/Black

Part Type: Manufactured

Weight: 151kg

Project No. 1001

Drawing No. 002

Drawn By: HRH

Rev: Rev1

1 : 10 @A3